

Invisible treatment
for visibly beautiful teeth

User information

Bonding of attachments

Attachments ensure an efficient and controllable tooth movement, in particular for cylindrical teeth, for tooth rotation, tooth axis corrections or to avoid undesired tilting.

Procedure

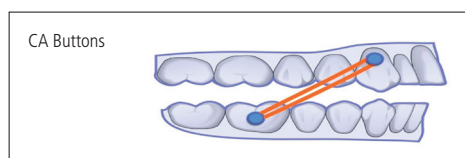
- Clean the tooth surface you want to bond. Lightly etch, if necessary.
- Before bonding, make sure that the adhesive surface is absolutely dry.
- Isolate transfer aid (transfer aligner) in advance.
- Completely fill up light-curing composite material in attachment recess.
- Exactly adapt the transfer aid onto the dental arch and cure composite in accordance with manufacturer's instructions.
- Carefully remove transfer aligner and remove adhesive residues.



Bonding of buttons

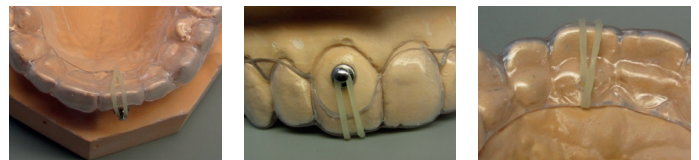
Buttons/brackets are used, if a tooth is to be more strongly extruded or intruded. Even malocclusion classes II/III can be improved with them.

- Clean the tooth surface you want to bond. Lightly etch, if necessary.
- Before bonding, make sure that the adhesive surface is absolutely dry.
- With the help of a composite, position the button slightly cervical to the tooth to avoid prior contacts of antagonists.



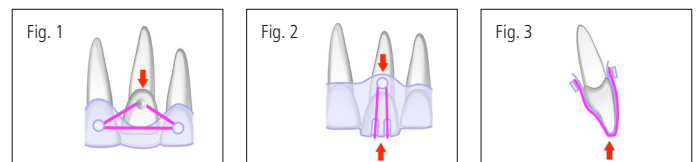
Elastics

Elastics are used for active tooth and jaw corrections. By using elastics, a tooth can be extruded or intruded within a short period of time.



Extruding: To achieve the desired effect, elastic must pass from the bracket/button over the aligner (fig. 1)!

Intruding: To achieve the desired effect, elastic must pass from the bracket/button over the aligner's incisal window (fig. 2+3).



ForcePoint

ForcePoints are specific "pressure points", which we already produce on the step model. In the treatment process, these "pressure points" are intensified on certain teeth and exert precisely accurate pressure to achieve an even more efficient tooth movement.

Slicing/Stripping

If, in case of lack of space and intricate malpositions, "tilting" is not possible, interproximal reduction (IPR) is partially necessary. We recommend to only slice teeth, which are already arranged to each other with the mesial/distal areas. Otherwise unaesthetic interdental spaces can develop. Considering your treatment requirements, IPR should be done in accordance with Movendi[®] planning specifications. You can find products required for IPR in a separate list provided by Word Class Orthodontics.